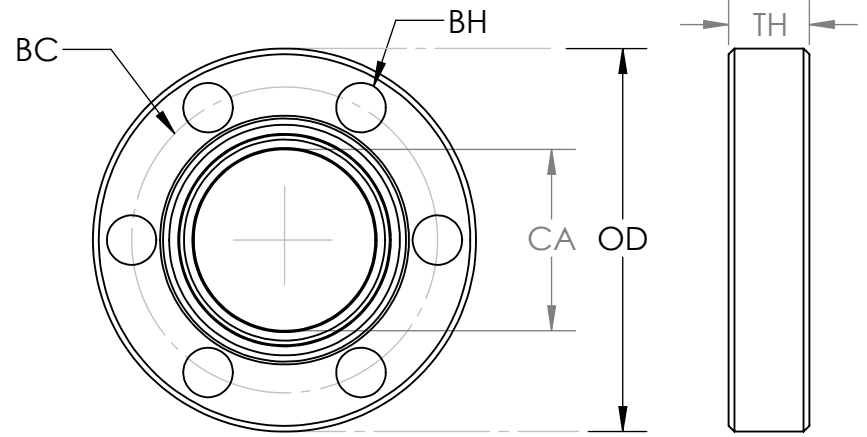
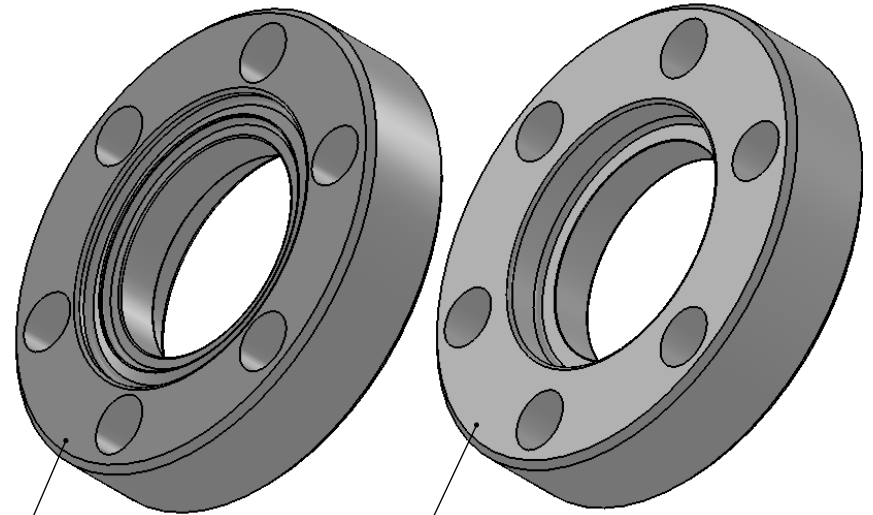


# CONFLAT FLANGE SIGHT WINDOW, EXTERNAL PRESSURE



No	ID NUMBER	OD [mm]	TH [mm]	BC [mm]	BH [mm]	CA [mm]
1	NW16CF	1 1/3" [33.78]	0.28" [7.1]	1.062" [26.9]	6x $\varnothing$ 0.172"x60° [6x $\varnothing$ 4.4x60°]	0.630" [16]
2	NW25CF	2 1/8" [53.98]	0.47" [11.9]	1.625" [41.3]	4x $\varnothing$ 0.265"x90° [4x $\varnothing$ 6.7x90°]	0.826" [21]
3	NW35CF	2 3/4" [69.85]	0.50" [12.7]	2.312" [58.7]	6x $\varnothing$ 0.265"x60° [6x $\varnothing$ 6.7x60°]	1.496" [38]
4	NW50CF	3 3/8" [85.85]	0.62" [15.8]	2.850" [72.4]	8x $\varnothing$ 0.332"x45° [8x $\varnothing$ 8.4x45°]	1.732" [44]
5	NW63CF	4 1/2" [114.30]	0.68" [17.3]	3.628" [92.2]	8x $\varnothing$ 0.332"x45° [8x $\varnothing$ 8.4x45°]	2.380" [60]
6	NW75CF	4 5/8" [116.33]	0.75" [19.1]	4.030" [102.4]	10x $\varnothing$ 0.332"x36° [10x $\varnothing$ 8.4x36°]	2.677" [68]
7	NW100CF	6" [152.40]	0.78" [19.8]	5.128" [130.3]	16x $\varnothing$ 0.332"x23° [16x $\varnothing$ 8.4x23°]	3.504" [89]
8	NW130CF	6 3/4" [171.45]	0.84" [21.4]	5.969" [151.6]	18x $\varnothing$ 0.332"x20° [18x $\varnothing$ 8.4x20°]	4.527" [115]
9	NW150CF	8" [203.20]	0.88" [22.4]	7.128" [181.1]	20x $\varnothing$ 0.332"x18° [20x $\varnothing$ 8.4x18°]	5.354" [136]
10	NW200CF	10" [254.00]	0.97" [24.6]	9.128" [231.9]	24x $\varnothing$ 0.332"x15° [24x $\varnothing$ 0.332x15°]	7.086" [184]
11	NW250CF	12" [304.80]	1.02" [25.4]	11.180" [284.0]	32x $\varnothing$ 0.332"x12° [32x $\varnothing$ 8.4x12°]	7.480" [190]
12	NW275CF	13 1/4" [336.55]	1.12" [25.9]	12.060" [306.3]	30x $\varnothing$ 0.390"x12° [30x $\varnothing$ 9.9x12°]	9.134" [232]



**NOTE: VACUUM SYSTEMS ARE CONSIDERED EXTERNAL PRESSURE**

## WINDOW MATERIAL GLASS OPTIONS:

- GLASS
- FUSED SILICA
- SAPPHIRE
- CUSTOM

**PROPRIETARY AND CONFIDENTIAL**  
THE INFORMATION CONTAINED IN THIS DRAWING IS THE SOLE PROPERTY OF RAYOTEK SCIENTIFIC, INC. ANY REPRODUCTION IN PART OR AS A WHOLE WITHOUT THE WRITTEN PERMISSION OF RAYOTEK SCIENTIFIC, INC. IS PROHIBITED.

UNLESS OTHERWISE SPECIFIED:	NAME	DATE
DIMENSIONS ARE IN INCHES	DRAWN	08-24-09
TOLERANCES:	CHECKED	
FRACTIONAL ±	ENG APPR.	
ANGULAR: MACH ± BEND ±1	MFG APPR.	
TWO PLACE DECIMAL ± 0.010	Q.A.	
THREE PLACE DECIMAL ± 0.005	COMMENTS:	
INTERPRET GEOMETRIC TOLERANCING PER:		
MATERIAL 304L SS		
FINISH		
DO NOT SCALE DRAWING		

**RAYOTEK SCIENTIFIC, INC.**

11499 Sorrento Valey Rd,  
San Diego, CA 92121  
Tel: 858-558-3671

SIZE	CONFLAT FLANGE EXTERNAL PRESSURE	REV C
SCALE:	WEIGHT:	SHEET 1 OF 1