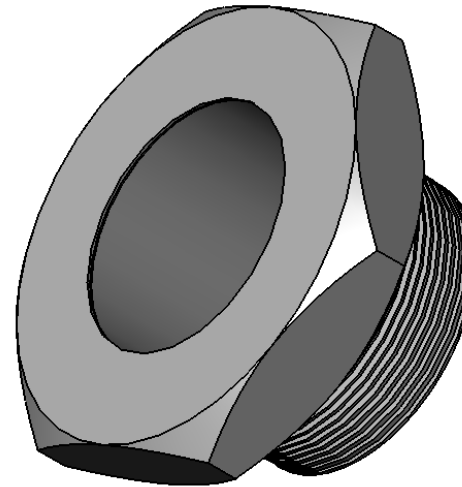
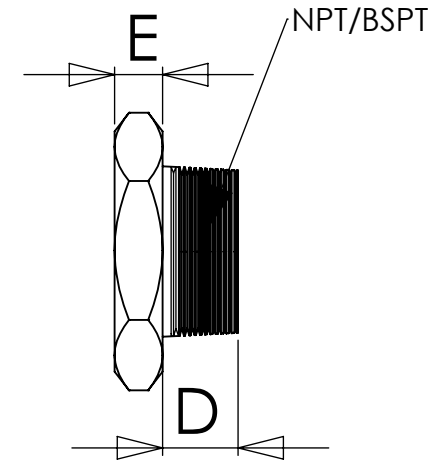
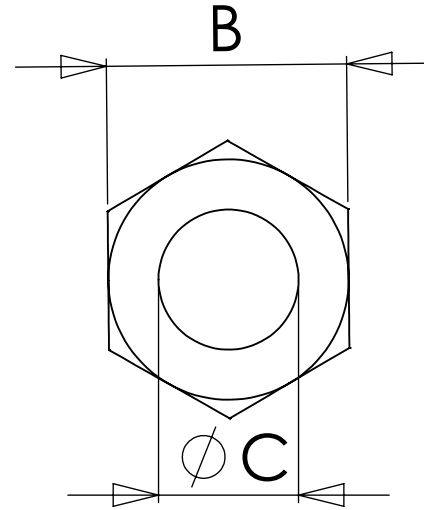


# SIGHT WINDOW, HIGH PRESSURE

**NOTE :**

1. Customer must specify internal or external pressure.
2. For safe and reliable performance do not exceed recommended NPT/BSPT torque standards when tightening sight windows.

NPT/BSPT	B	C	D	E
2"	3.000	1.375	0.760	0.710
1-1/2"	2.250	1.060	0.715	0.600
1-1/4"	2.000	0.896	0.670	0.540
1"	1.562	0.731	0.670	0.480
3/4"	1.325	0.510	0.549	0.420
1/2"	1.000	0.415	0.525	0.350
3/8"	0.812	0.385	0.396	0.300
1/4"	0.687	0.340	0.396	0.265



NOMINAL DIAMETER NPT/BSPT
1/4" - 0.540"
3/8" - 0.675"
1/2" - 0.840"
3/4" - 1.050"
1" - 1.315"
1-1/4" - 1.660"
1-1/2" - 1.900"
2" - 2.375"

**WINDOW MATERIAL OPTIONS:**

- GLASS
- FUSED SILICA
- SAPPHIRE
- CUSTOM

**PROPRIETARY AND CONFIDENTIAL**  
 THE INFORMATION CONTAINED IN THIS DRAWING IS THE SOLE PROPERTY OF RAYOTEK SCIENTIFIC, INC. ANY REPRODUCTION IN PART OR AS A WHOLE WITHOUT THE WRITTEN PERMISSION OF RAYOTEK SCIENTIFIC, INC. IS PROHIBITED.

DIMENSIONS ARE IN INCHES  
 TOLERANCES: ± 0.01  
 UNLESS NOTED

**303S**  
 FINISH: --  
 DO NOT SCALE DRAWING

NAME	DATE
	08/24/09
CHECKED	
ENG APPR.	
MFG APPR.	
Q.A.	
COMMENTS:	

Rayotek Scientific, Inc,  
 11499 Sorrento Valley Rd,  
 San Diego, CA. 92121  
 Tel: 858-558-3671

SIZE <b>A</b>	<b>HP SIGHT WINDOW</b>	Rev J
SCALE:2:1	WEIGHT:	SHEET 1 OF 1